

# State of Wyoming Corner Record

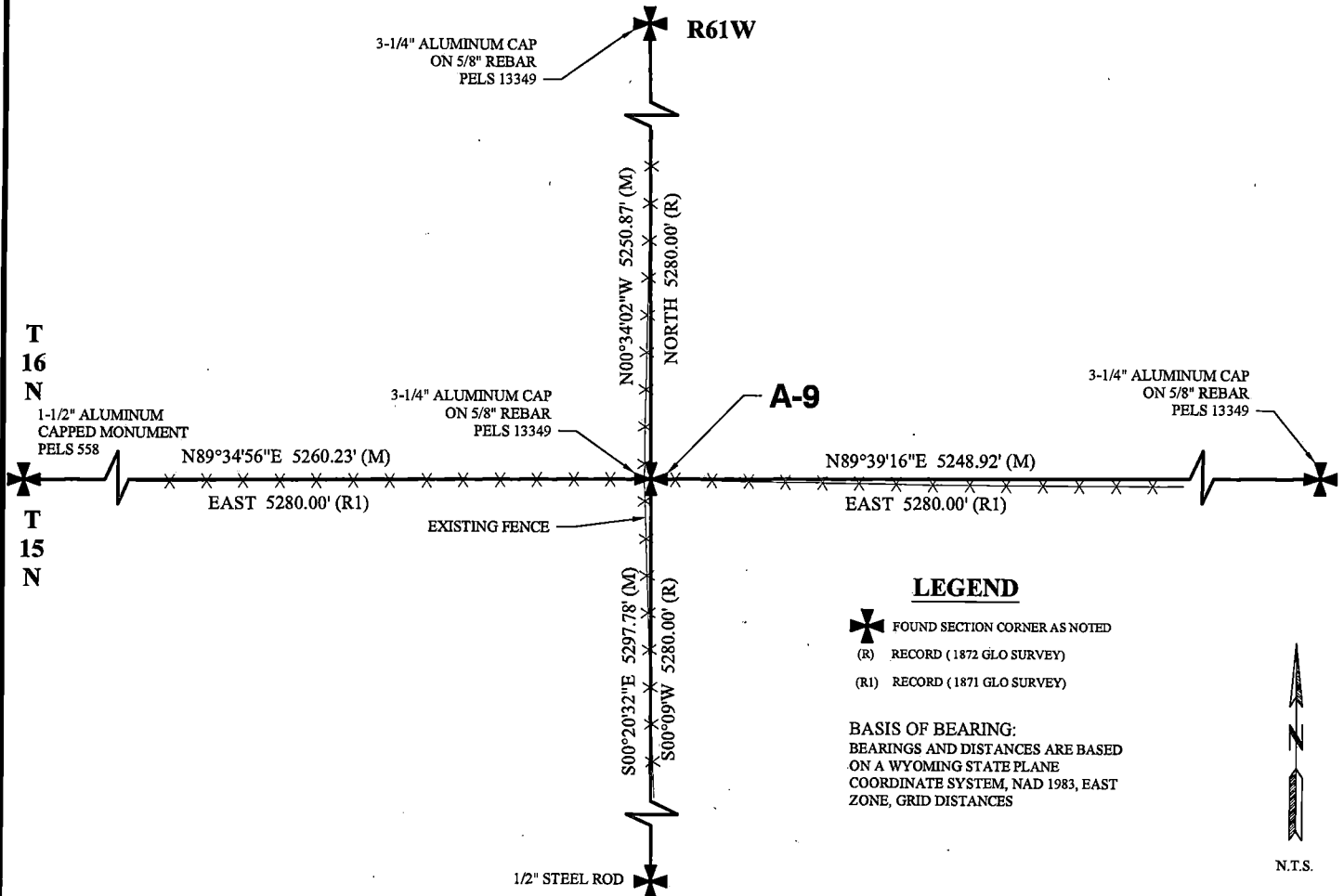
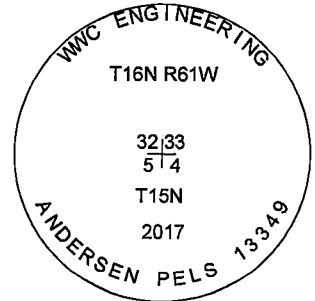
(In compliance with the CORNER PERPETUATION AND FILING ACT, Wyoming Statutes, 1997, Section 33-29-140, et seq., and the Rules and Regulations of the Board of Registration for Professional Engineers and Professional Land Surveyors)

Reverse side of this form may be used if more space is needed.

Record of original survey and citation of source of historical information (if corner is lost or obliterated.) Description of corner monumentation evidence found and/or monument and accessories established to perpetuate the location of this corner. Sketch of relative location of monument, accessories, and reference points with course and distance to adjacent corner(s) (if determined in this survey). Method and rationale for reestablishment of lost or obliterated corner.

**EVIDENCE RECORD:** 1871 GLO Survey: East on a true line along the south boundary of section 32, 80.00 chains. Set a granite boulder 18"x10"x8" for corner to sections 32, 33, 4 & 5.

**EVIDENCE FOUND:** September 2017: Granite boulder from 1871 GLO survey not found. Accepted north-south east-west fence intersection as best available evidence for the corner to sections 32, 33, 4 & 5. Set a 3 1/4" aluminum cap marked as shown on a 5/8" rebar, 24" long, flush with ground surface at fence intersection.



### LEGEND

- FOUND SECTION CORNER AS NOTED
- (R) RECORD (1872 GLO SURVEY)
- (R1) RECORD (1871 GLO SURVEY)

**BASIS OF BEARING:**  
BEARINGS AND DISTANCES ARE BASED ON A WYOMING STATE PLANE COORDINATE SYSTEM, NAD 1983, EAST ZONE, GRID DISTANCES



Date of Field Work: September 19, 2017

Office Reference: 2017-135

### CROSS INDEX DIAGRAM

	1	2	3	4	5	6	7	8	9	10	11	12	13	14	15	16	17	18	19	20	21	22	23	24	25
A																									
B																									
C		6				5				4				3					2						
D																									
E																									
F																									
G			7			8				9				10					11						
H																									
J																									
K																									
L			18			17				16				15					14						
M																									
N																									
O																									
P			19			20				21				22					23						
Q																									
R																									
S																									
T			30			29				28				27					26						
U																									
V																									
W																									
X			31			32				33				34					35						
Y																									
Z																									

Land Surveyor / Firm / Address  
Clint E. Andersen

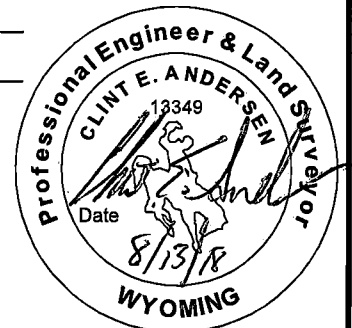
WWC Engineering.

51 N. 15th Street, Suite 1

Billings, MT 59101

Telephone: (406) 894-2210

This corner record was prepared by me or under my direction and supervision.  
SEAL & SIGNATURE



Corner Name: Northeast Corner  
SBRPEPLS/PLSW: March 1994; PLSW January 1998

Section: 5 T 15N R 61W; 6TH P.M. Cross-Index No.: A-9

RECORDED 10/1/2018 AT 1:27 PM BK# 2598 PG# 270  
Debra K. Lee, CLERK OF LARAMIE COUNTY, WY PAGE 1 OF 1